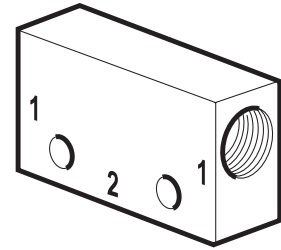


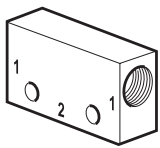
- Allows two separate signals to be applied to the air pilot
- 0,6 bar differential, Viton seals as standard



Operating information

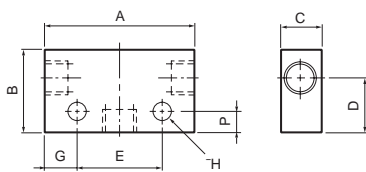
Operating pressure:	1,3 to 17 bar
Flow:	See table below
Operating temperature:	-10°C to +60°C
Body material M5 and G1/8:	Aluminium
Body material G1/4	Zinc
Shuttle ball material:	Plastic

Symbol



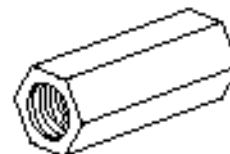
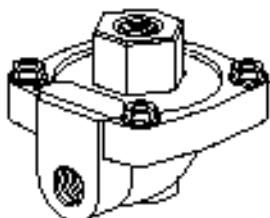
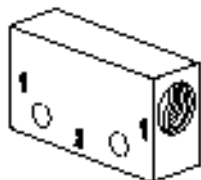
Port Size	Qmax input at 6 bar, l/min*	Weight kg	Order Code
M5	36	0,040	M33005
G1/8	509	0,100	B43005B
G1/4	1076	0,172	B53005A

Shuttle Valves - Dimensions



Order code	Port Size	A	B	C	D	E	F	G	H
M33005	M5	27,5	24	15	16,0	15	6	6,3	3,2
M43005B	G1/8	44,0	24	15	16,0	25	6	9,5	4,5
B53005A	G1/4	52,0	30	22	20,5	35	10	8,5	5,5

Service and Replacement Parts



P4Q Series Quick Exhaust Valves

Part Number	Repair Kit	
	Standard (* = A)	High Temperature (* = V)
P4Q-B*12	3340BR	3340BVR
P4Q-B*13		
P4Q-C*14	3340CR	3340CRV
P4Q-C*16		

Shuttle Valves

No internal components available, **replace complete valve.**

PWA-L Line Mounted Non-return Valves

No internal components available, **replace complete valve.**

VB Series Non-return Valves

Part Number	Valve Seat
VB12-Q-NQ-5	9124863400
VB22-Q-NQ-5	9124864100
VB42-Q-NQ-5	9124864800